

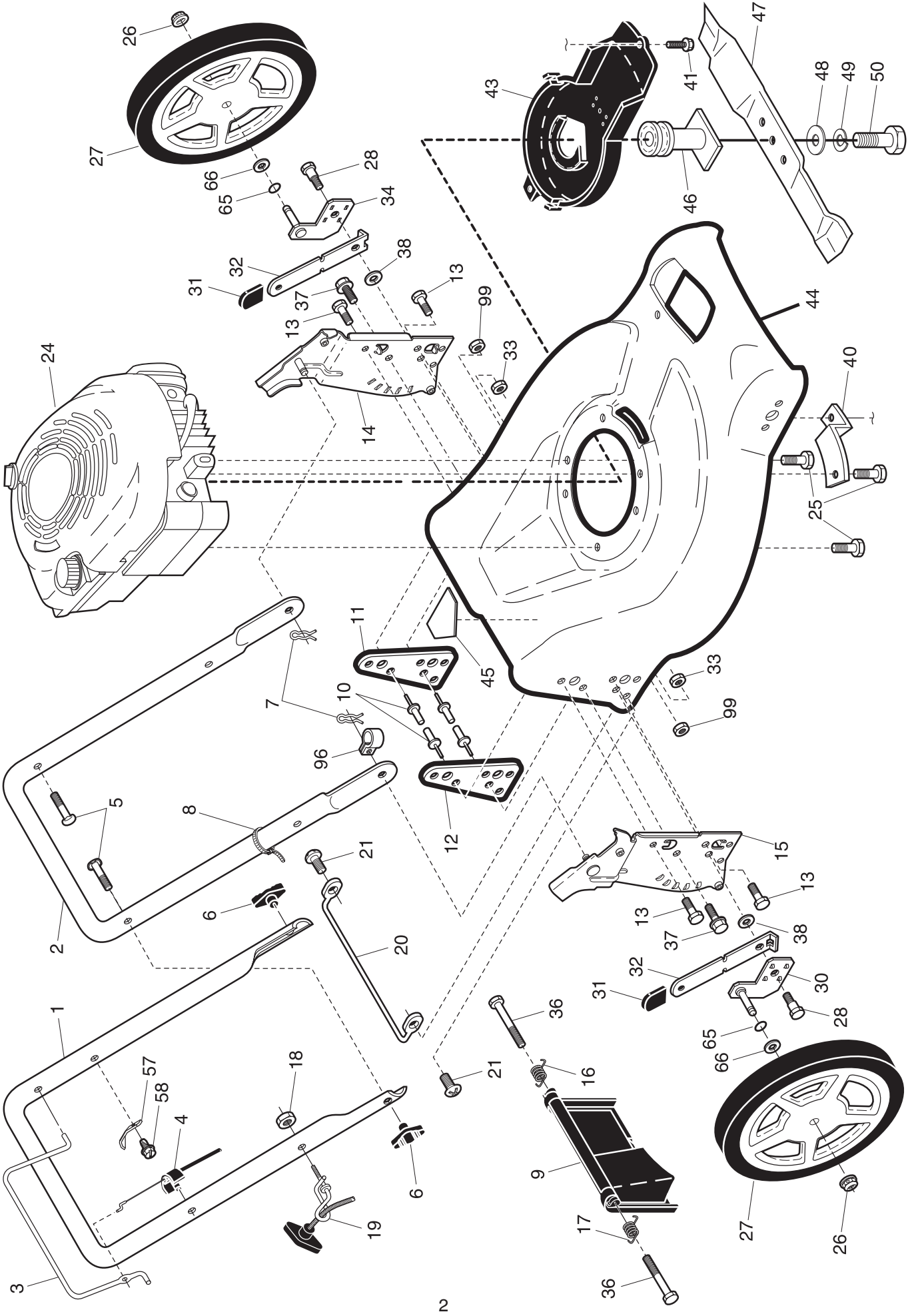
ILLUSTRATED PARTS LIST

MODEL NUMBER PP5051CMD(2)

PRODUCT NUMBER 961 41 01-29

MFG. ID. NUMBER 96141012901

ROTARY LAWN MOWER -- MODEL NUMBER PP5051CMD(2) (96141012901) PRODUCT NO. 961 41 01-29



ROTARY LAWN MOWER - - MODEL NUMBER PP5051CMD(2) (96141012901) PRODUCT NO. 961 41 01-29

KEY PART NO.	DESCRIPTION	KEY PART NO.	DESCRIPTION
1	532 19 84-59 Upper Handle	30	532 40 25-71 Axle Arm Assembly, Rear, RH
2	532 15 36-05 Lower Handle	31	532 08 78-77 Selector Knob
3	532 19 84-64 Control Bar	32	532 19 01-57 Selector Spring
4	532 18 35-67 Engine Zone Control Cable	33	873 80 05-00 Nut, Hex, Nylock 5/16-18
5	532 19 15-74 Handle Bolt	34	532 40 25-72 Axle Arm Assembly, Rear, LH
6	532 19 19-38 Handle Knob	36	532 18 41-93 Bolt
7	532 05 17-93 Hairpin Cotter	37	874 78 05-12 Screw, Hex Head 5/16-18 x 3/4
8	532 06 64-26 Wire Tie	38	819 11 22-06 Washer
9	532 40 69-85 Rear Door	40	532 19 09-39 Mounting Bracket, Debris Shield
10	532 12 84-15 Pop Rivet	41	532 19 23-25 Screw
11	532 41 05-40 Support Bracket, LH	43	Debris Shield
12	532 41 05-42 Support Bracket, RH	44	532 40 58-45 Kit, Lawn Mower Housing
13	817 06 04-10 Screw 1/4-20 x 5/8		(Includes Key Numbers 10, 11, 12 and 45)
14	532 18 25-43 Handle Bracket Assembly, LH	45	532 18 21-66 Danger Decal
15	532 18 25-45 Handle Bracket Assembly, RH	46	532 40 46-33 Blade Adapter
16	532 40 54-17 Spring, Rear Door, LH	47	532 19 93-77 Blade 21"
17	532 40 54-18 Spring, Rear Door, RH	48	532 85 10-74 Hardened Washer
18	532 13 20-04 Keps Locknut 1/4-20	49	532 85 02-63 Helical Washer 3/8-24 x 1-3/8 Grade 8
19	532 19 47-88 Rope Guide	50	532 85 10-84 Hex Head Machine Screw 3/8-24 x 1-3/8 Grade 8
20	532 41 05-36 Foot Guard, C.E.	57	532 12 51-62 Bracket, Upstop
21	532 05 45-83 Screw, Tapping 1/4-20 x 1/2	58	532 75 06-34 Screw
24	----- Engine, Briggs & Stratton, Model No. 12F802	65	532 19 74-80 O-Ring
	(Order parts from engine manufacturer)	66	532 08 83-48 Washer
25	532 15 04-06 Hex Head Thread Rolling Screw 3/8-16 x 1-1/8	96	532 19 79-91 Clip, Cable
26	532 40 91-49 Hex Flange Nut	99	532 19 85-41 Nut, Hex 5/16-18
27	532 40 31-22 Wheel & Tire Assembly	--	532 41 01-52 Operator's Manual, Scandinavian
28	532 16 08-28 Shoulder Bolt 5/16-18 x .33	--	532 41 01-53 Operator's Manual, Baltic

NOTE: All component dimensions given in U.S. inches. 1 inch = 25.4 mm. **IMPORTANT:** Use only Original Equipment Manufacturer (O.E.M.) replacement parts. Failure to do so could be hazardous, damage your lawn mower and void your warranty.

